

START  
WWCUSTS  
Mainline Code

<Line: 0046.00>  
Perform  
SFLWRT

<Lines: 0048.00 to 0049.00>  
Repeat While \*IN03(Command Three) equal to 'o' /\*B-----01  
And \*IN12 equal to 'o' /\*|

<Line: 0050.00>  
Move \*BLANKS to LOCATE /\*|

<Lines: 0052.00 to 0054.00>  
Write ZZTR01(Work with Customer) /\*|  
99 Write ZZMCO1(Work with Customer) /\*|  
Execute Format ZZCT01(Work with Customer) /\*|

<Line: 0056.00>  
Call 'XBCCLMSG' /\*|

<Lines: 0057.00 to 0058.00>  
If \*IN03(Command Three) equal to '1' /\*B-----02|  
Or \*IN12 equal to '1' /\*||

<Line: 0059.00>  
Leave /\*||

<Line: 0060.00>  
Endif /\*E-----02|

<Line: 0062.00>  
If LOCATE not equal to \*BLANKS /\*B-----02|

<Lines: 0063.00 to 0064.00>  
Move \*ZEROS to SFLRRN /\*||  
Move LOCATE to XWBCCD(Customer) /\*||

<Line: 0065.00>  
Perform  
SFLWRT /\*||

<Line: 0066.00>  
Iter /\*||

<Line: 0067.00>  
Endif /\*E-----02|

<Line: 0069.00>  
If \*IN28(Roll-up Request) equal to '1' /\*B-----02|

<Line: 0070.00>  
Perform  
CMDKEY /\*||

<Line: 0073.00>  
Perform  
ZSELEC /\*||

<Line: 0074.00>  
Endif /\*E-----02|

<Line: 0076.00>  
If SFLCHG equal to '1' /\*B-----02|

<Line: 0077.00>  
Move \*LOVAL to XWBCCD(Customer) /\*||

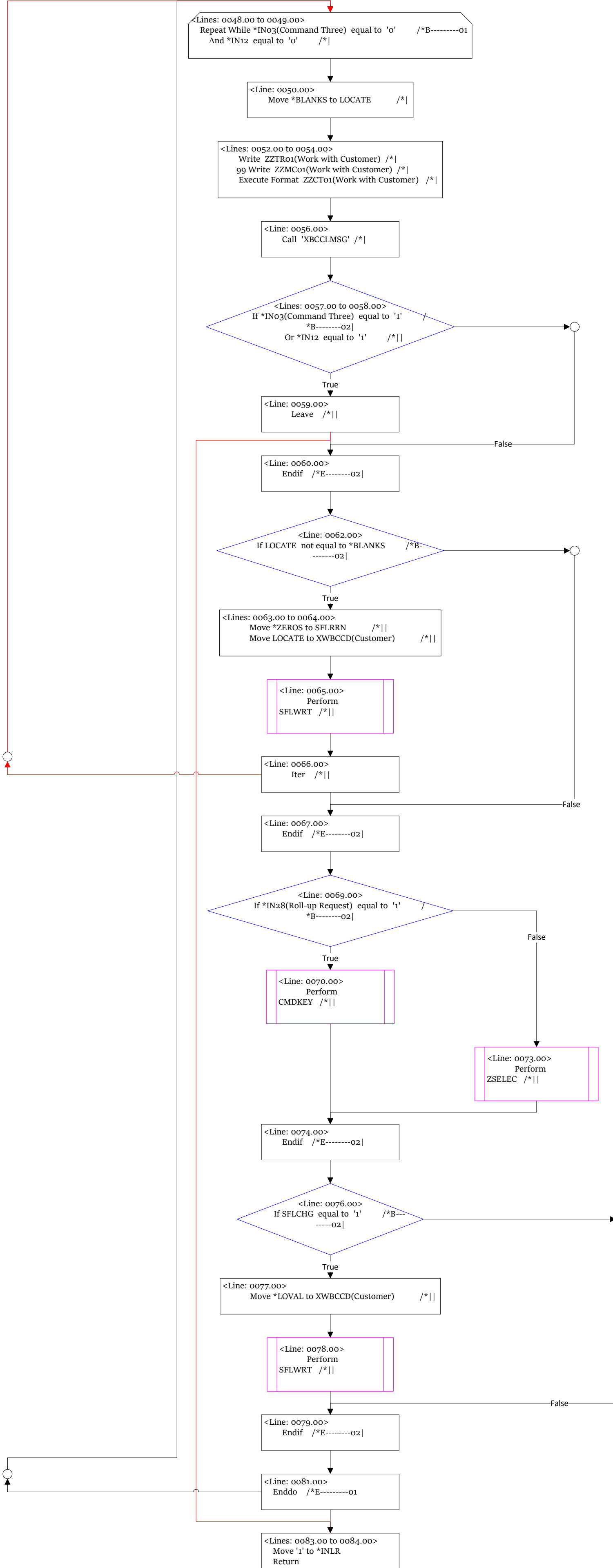
<Line: 0078.00>  
Perform  
SFLWRT /\*||

<Line: 0079.00>  
Endif /\*E-----02|

<Line: 0081.00>  
Enddo /\*E-----01

<Lines: 0083.00 to 0084.00>  
Move '1' to \*INLR  
Return

END  
WWCUSTS  
Mainline Code



START  
WWCUSTS  
Subroutine:SFLWRT

<Line: 0090.00>  
SFLWRT : Begin Subroutine

<Line: 0095.00>  
If SFLRRN = 0

<Lines: 0096.00 to 0099.00>  
Seton |\*IN74|  
Setoff |\*IN71|\*IN72|\*IN81|  
Write ZZCTo1(Work with Customer) |SETON \*IN99 IF ERROR|  
Setoff |\*IN74|

<Lines: 0101.00 to 0102.00>  
Move \*ZEROS to SFLRRN  
Set Lower CUSTS Using XWBCCD(Customer)

<Line: 0103.00>  
Endif

<Line: 0105.00>  
Move \*ZEROS to SFLCTR

<Lines: 0106.00 to 0107.00>  
Repeat While \*IN81 equal to 'o' /\*B-----01  
And SFLCTR less than 12

<Line: 0108.00>  
Read(n) CUSTS |SETON \*IN81 IF EOF |

<Line: 0109.00>  
If \*IN81 equal to 'o' /\*B---  
-----01

<Lines: 0110.00 to 0111.00>  
SFLRRN = SFLRRN + 1 /\*|  
SFLCTR = SFLCTR + 1 /\*|

<Line: 0112.00>  
If SFLCTR = 1

<Line: 0113.00>  
SHWREC = SFLRRN

<Line: 0114.00>  
Endif

<Lines: 0115.00 to 0116.00>  
Move \*BLANKS to DSSEL /\*|  
Write ZZSFo1(Work with Customer) |SETON \*IN99 IF ERROR| /\*|

<Line: 0117.00>  
Endif /\*E-----01

<Line: 0118.00>  
Enddo /\*E-----01

<Line: 0120.00>  
If SFLRRN greater than  
o

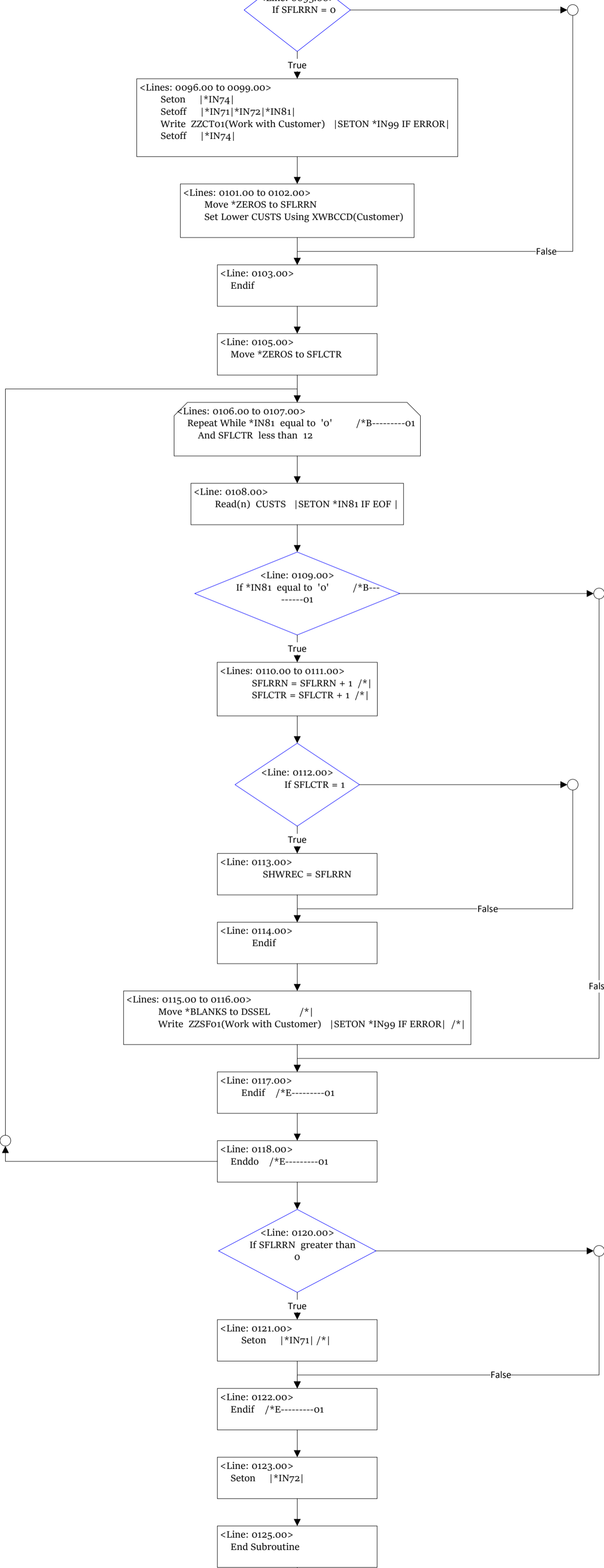
<Line: 0121.00>  
Seton |\*IN71| /\*|

<Line: 0122.00>  
Endif /\*E-----01

<Line: 0123.00>  
Seton |\*IN72|

<Line: 0125.00>  
End Subroutine

END  
WWCUSTS  
Mainline CodeSFLWRT



START  
WWCUSTS  
Subroutine:CMDKEY

<Line: 0129.00>  
CMDKEY : Begin Subroutine

<Lines: 0133.00 to  
0134.00>  
Select /\*B-----01

<Line: 0135.00>  
When \*IN26(End of File) equal to '1' /  
\*W.....01

<Line: 0136.00>  
Perform  
SFLWRT /\*||

<Line: 0138.00>  
When \*INo6(Command Six) equal to '1' /  
\*W.....01

<Line: 0139.00>  
Perform  
addrec /\*||

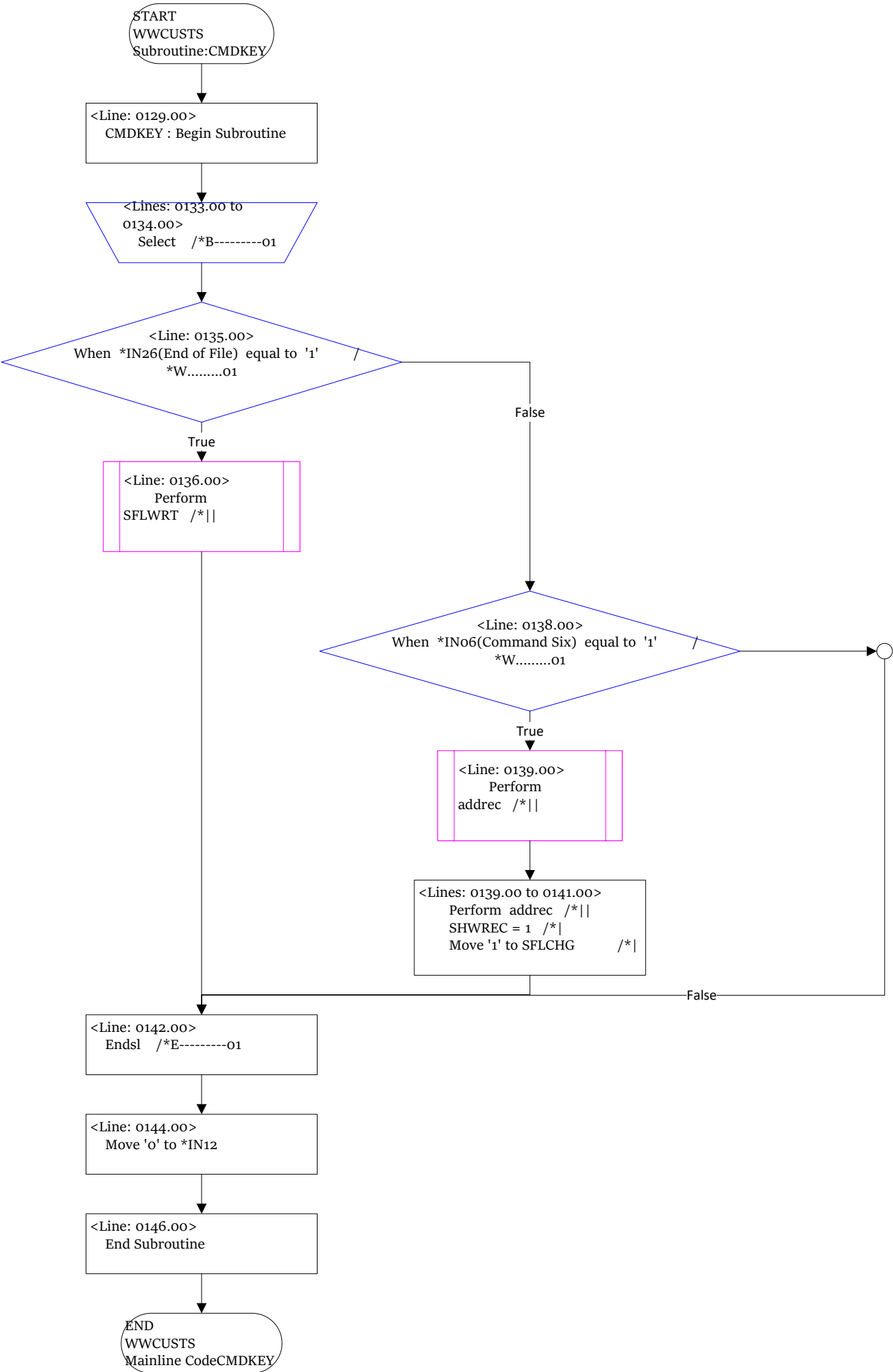
<Lines: 0139.00 to 0141.00>  
Perform addrec /\*||  
SHWREC = 1 /\*|  
Move '1' to SFLCHG /\*|

<Line: 0142.00>  
Endsl /\*E-----01

<Line: 0144.00>  
Move 'o' to \*IN12

<Line: 0146.00>  
End Subroutine

END  
WWCUSTS  
Mainline CodeCMDKEY



START  
WWCUSTS  
Subroutine: ZSELEC

<Line: 0150.00>  
ZSELEC : Begin Subroutine

<Lines: 0154.00 to 0155.00>  
Move 'o' to SFLCHG  
Readc ZZSF01(Work with Customer) |SETON \*IN35 IF EOF |

<Line: 0158.00>  
Repeat While \*IN35 equal to 'o' /\*B-----01

<Line: 0159.00>  
Move '1' to SFLCHG /\*|

<Line: 0161.00>  
Select /\*B-----  
02|

<Line: 0163.00>  
When DSSEL equal to '2' /  
\*W.....02|

<Line: 0164.00>  
Perform  
chgrec /\*||

<Line: 0166.00>  
When DSSEL equal to  
'4' /\*||

<Line: 0167.00>  
Perform  
delrec /\*||

<Line: 0169.00>  
When DSSEL equal to  
'5' /\*||

<Line: 0170.00>  
Perform  
dsprec /\*||

<Line: 0172.00>  
When DSSEL equal to  
'6' /\*||

<Lines: 0173.00 to 0174.00>  
Call 'CUSTMNT1' /\*||  
----- XWBCCD(Customer)

<Line: 0176.00>  
When DSSEL equal to '8' /  
\*W.....02|

<Line: 0177.00>  
Perform  
ZORDER /\*||

<Line: 0179.00>  
When DSSEL equal to '9' /  
\*W.....02|

<Line: 0180.00>  
Perform  
ZHISTO /\*||

<Line: 0181.00>  
Endsl /\*E-----02|

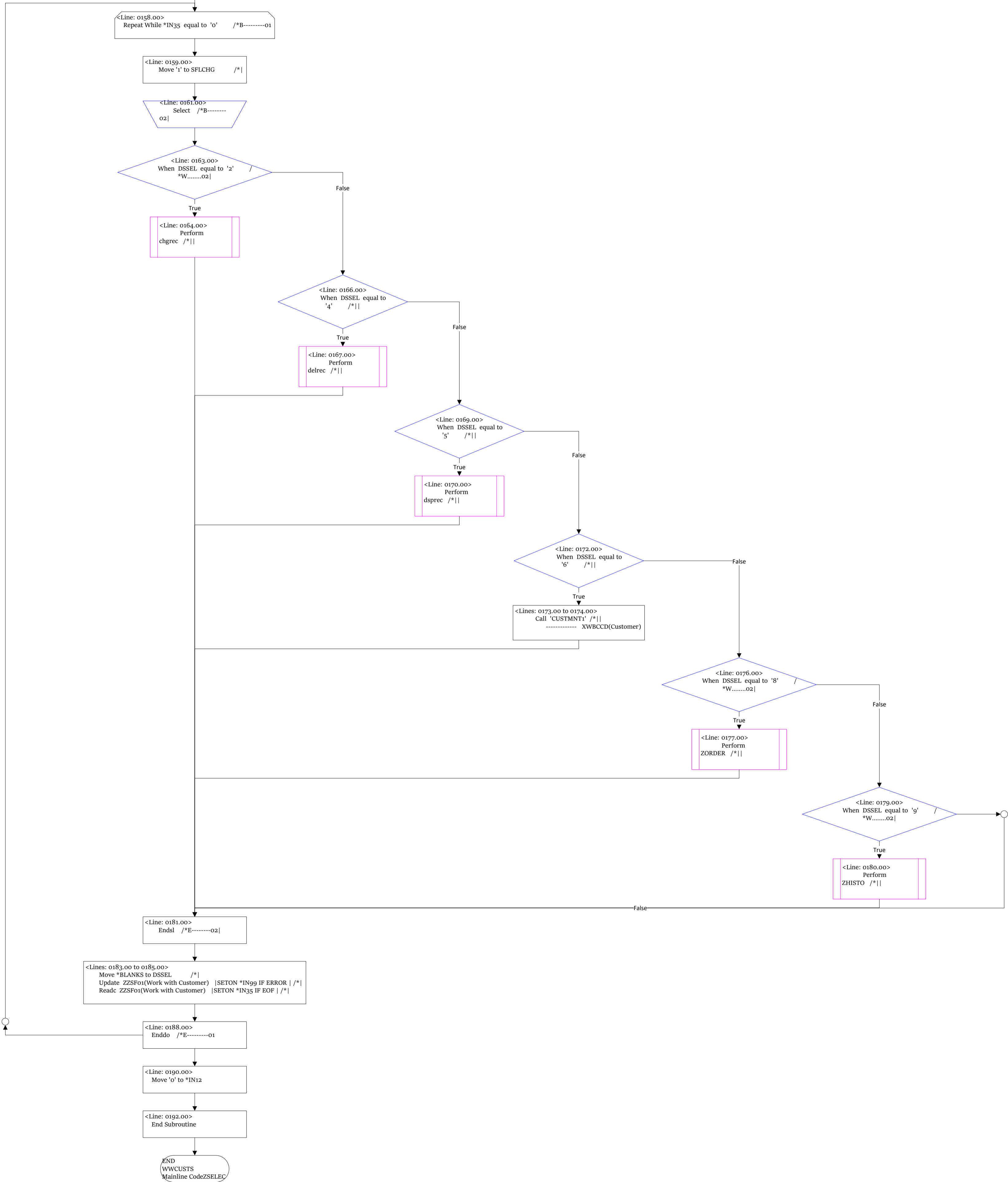
<Lines: 0183.00 to 0185.00>  
Move \*BLANKS to DSSEL /\*|  
Update ZZSF01(Work with Customer) |SETON \*IN99 IF ERROR | /\*|  
Readc ZZSF01(Work with Customer) |SETON \*IN35 IF EOF | /\*|

<Line: 0188.00>  
Enddo /\*E-----01

<Line: 0190.00>  
Move 'o' to \*IN12

<Line: 0192.00>  
End Subroutine

END  
WWCUSTS  
Mainline CodeZSELEC



START  
WWCUSTS  
Subroutine:VALID1

<Line: 0196.00>  
VALID1 : Begin Subroutine

<Line: 0200.00>  
Do /\*B-----01

<Line: 0202.00>  
If XWBCCD(Customer) equal to \*BLANKS  
/\*B-----02|

True

<Lines: 0203.00 to 0208.00>  
Move '1' to \*IN99 /\*||  
Move \*ON to \*IN31 /\*||  
Move 'OEM0002' to MSGID /\*||  
Call RTNMTX /\*||  
----- MSGID /\*||  
----- ERRMSG (1.32) /\*||

<Line: 0209.00>  
Leave /\*||

<Line: 0210.00>  
Endif /\*E-----02|

<Line: 0212.00>  
If ACTDSP equal to 'ADDITION' /\*B-  
-----02|

True

<Line: 0213.00>  
Set Lower CUSTS Using XWBCCD(Customer) |SETON \*IN99 IF EQUAL | /\*||

<Line: 0214.00>  
If \*IN99 equal to '1' /\*B---  
----03||

True

<Lines: 0215.00 to 0219.00>  
Move \*ON to \*IN31 /\*||  
Move 'Y2U0003' to MSGID /\*||  
Call RTNMTX /\*||  
----- MSGID /\*||  
----- ERRMSG (1.32) /\*||

<Line: 0220.00>  
Leave /\*||

<Line: 0221.00>  
Endif /\*E-----03||

<Line: 0222.00>  
Endif /\*E-----02|

<Line: 0224.00>  
If XWG4TX(Cust Ref) equal to \*BLANKS  
/\*B-----02|

True

<Lines: 0225.00 to 0230.00>  
Move \*ON to \*IN32 /\*||  
Move \*ON to \*IN99 /\*||  
Move 'OEM0012' to MSGID /\*||  
Call RTNMTX /\*||  
----- MSGID /\*||  
----- ERRMSG (1.32) /\*||

<Line: 0231.00>  
Leave /\*||

<Line: 0232.00>  
Endif /\*E-----02|

<Line: 0234.00>  
Read CUSGRP Using XWBNC(DGrp) |SETON \*IN99 IF NOT FOUND| /\*||

<Line: 0235.00>  
If \*IN99 equal to '1' /\*B---  
----02|

True

<Lines: 0236.00 to 0240.00>  
Move '1' to \*IN33 /\*||  
Move 'OES0374' to MSGID /\*||  
Call RTNMTX /\*||  
----- MSGID /\*||  
----- ERRMSG (1.32) /\*||

<Line: 0241.00>  
Leave /\*||

<Line: 0242.00>  
Endif /\*E-----02|

<Line: 0244.00>  
Read SLMEN Using PERSON(Rep) |SETON \*IN99 IF NOT FOUND| /\*||

<Line: 0245.00>  
If \*IN99 equal to '1' /\*B---  
----02|

True

<Lines: 0246.00 to 0250.00>  
Move '1' to \*IN34 /\*||  
Move 'OEM0023' to MSGID /\*||  
Call RTNMTX /\*||  
----- MSGID /\*||  
----- ERRMSG (1.32) /\*||

<Line: 0251.00>  
Leave /\*||

<Line: 0252.00>  
Endif /\*E-----02|

<Line: 0254.00>  
Read DISTS Using DSDCDE(Code) |SETON \*IN99 IF NOT FOUND| /\*||

<Line: 0255.00>  
If \*IN99 equal to '1' /\*B---  
----02|

True

<Lines: 0256.00 to 0260.00>  
Move '1' to \*IN35 /\*||  
Move 'OEM0018' to MSGID /\*||  
Call RTNMTX /\*||  
----- MSGID /\*||  
----- ERRMSG (1.32) /\*||

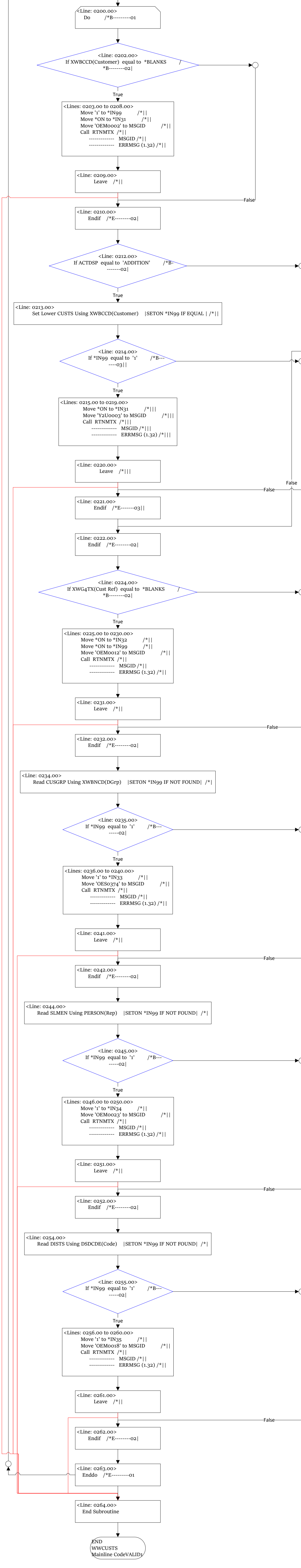
<Line: 0261.00>  
Leave /\*||

<Line: 0262.00>  
Endif /\*E-----02|

<Line: 0263.00>  
Enddo /\*E-----01

<Line: 0264.00>  
End Subroutine

END  
WWCUSTS  
Mainline CodeVALID1



START  
WWCUSTS  
Subroutine:ADDREC

<Line: 0268.00>  
ADDREC : Begin Subroutine

<Lines: 0272.00 to 0275.00>  
Move 'o' to \*IN94  
Move 'i' to \*IN96  
Move 'o' to \*IN97  
Move Left 'ADDITION' to ACTDSP

<Line: 0276.00>  
Perform  
OFFIND

<Lines: 0276.00 to 0281.00>  
Perform OFFIND  
Clear CUSTSR(by Representative/Customer)  
Evaluate PNAME(Full Name) = \*blanks /\*  
Evaluate DNAME(Full Name) = \*blanks /\*  
Evaluate XWKHTX(Description) = \*blanks /\*

<Line: 0282.00>  
Perform  
mvdbsc

<Lines: 0285.00 to 0286.00>  
Repeat While \*IN03(Command Three) not equal to '1'  
And \*IN12 not equal to '1' /\*|||

<Line: 0288.00>  
Execute Format ZZFT01(Work with Customer) /\*|||

<Line: 0289.00>  
Perform  
MVSCDB

<Lines: 0289.00 to 0290.00>  
Perform MVSCDB  
Call 'XBCLMSG' /\*|||

<Line: 0291.00>  
Perform  
OFFIND /\*|||

<Line: 0293.00>  
Select

<Line: 0295.00>  
When \*IN04(Command Four) equal to '1' /  
\*W.....04|||

<Line: 0296.00>  
Perform SRPROM /  
\*|||

<Line: 0298.00>  
When \*IN08 equal to '1' /  
\*W.....04|||

<Line: 0299.00>  
Perform ZORDER /  
\*|||

<Line: 0301.00>  
When \*IN09 equal to '1' /  
\*W.....04|||

<Line: 0302.00>  
Perform ZHISTO /  
\*|||

<Line: 0303.00>  
Endsl /\*E-----04|||

<Lines: 0305.00 to 0306.00>  
If \*IN03(Command Three) equal to '1' /  
\*B-----04|||  
Or \*IN12 equal to '1' /\*|||

<Line: 0307.00>  
Leave

<Line: 0308.00>  
Endif

<Lines: 0310.00 to 0312.00>  
If \*IN04(Command Four) equal to '1' /  
\*B-----04|||  
Or \*IN08 equal to '1' /\*|||  
Or \*IN09 equal to '1' /\*|||

<Line: 0313.00>  
Iter /\*|||

<Line: 0314.00>  
Endif /\*E-----04|||

<Line: 0316.00>  
Perform VALID1 /  
\*|||

<Line: 0319.00>  
If \*IN99 equal to '1' /\*B---  
-05|||

<Line: 0321.00>  
Move Left ERRMSG to ZMSAGE /\*|||

<Line: 0322.00>  
Perform  
mvdbsc

<Line: 0323.00>  
Iter /\*|||

<Line: 0324.00>  
Endif /\*E-----05|||

<Line: 0327.00>  
Execute Format ZCCNF1(Work with Customer) /\*|||

<Lines: 0328.00 to 0329.00>  
If \*IN03(Command Three) not equal to '1' /  
\*B-----04|||  
And \*IN12 not equal to '1' /\*|||

<Line: 0331.00>  
Write CUSTSR(by Representative/Customer) |SETON \*IN99 IF ERROR| /\*|||

<Line: 0332.00>  
If \*IN99 equal to '1' /\*B---  
---04|||

<Lines: 0333.00 to 0336.00>  
Move 'Y2U0004' to MSGID /\*|||  
Call RTNMTX /\*|||  
----- MSGID /\*|||  
----- ERRMSG (1.32) /\*|||

<Line: 0338.00>  
Move Left ERRMSG to ZMSAGE /\*|||

<Line: 0341.00>  
Endif /\*|||

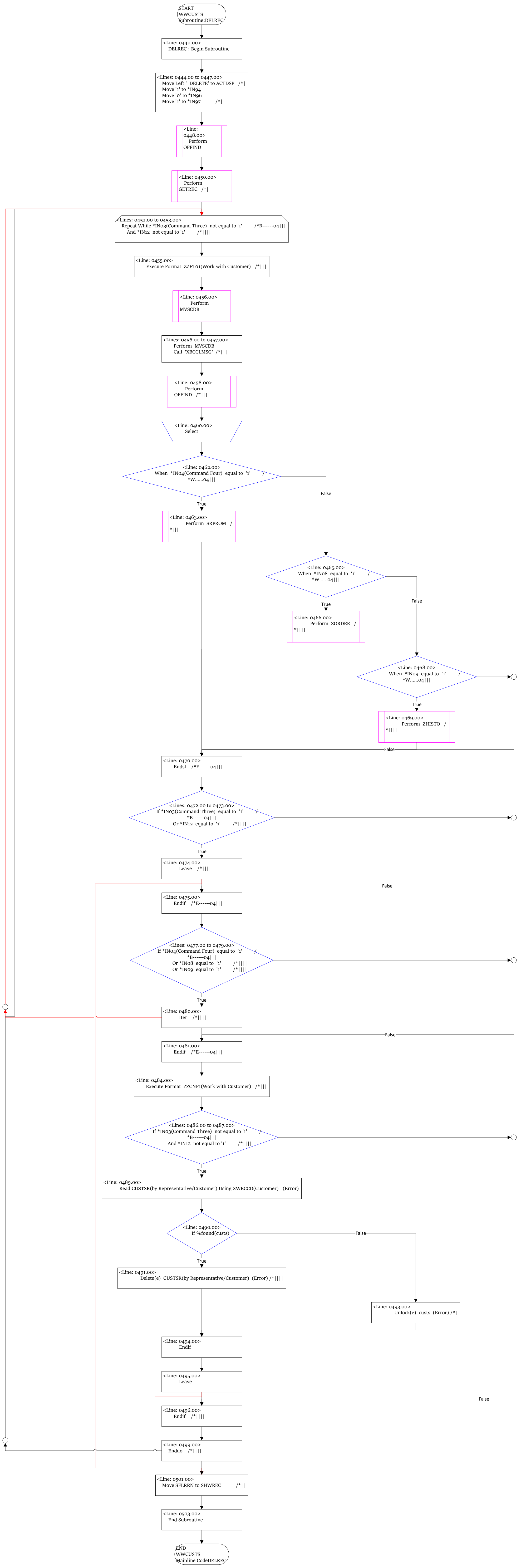
<Line: 0342.00>  
Endif /\*|||

<Line: 0344.00>  
Enddo /\*E-----05|||

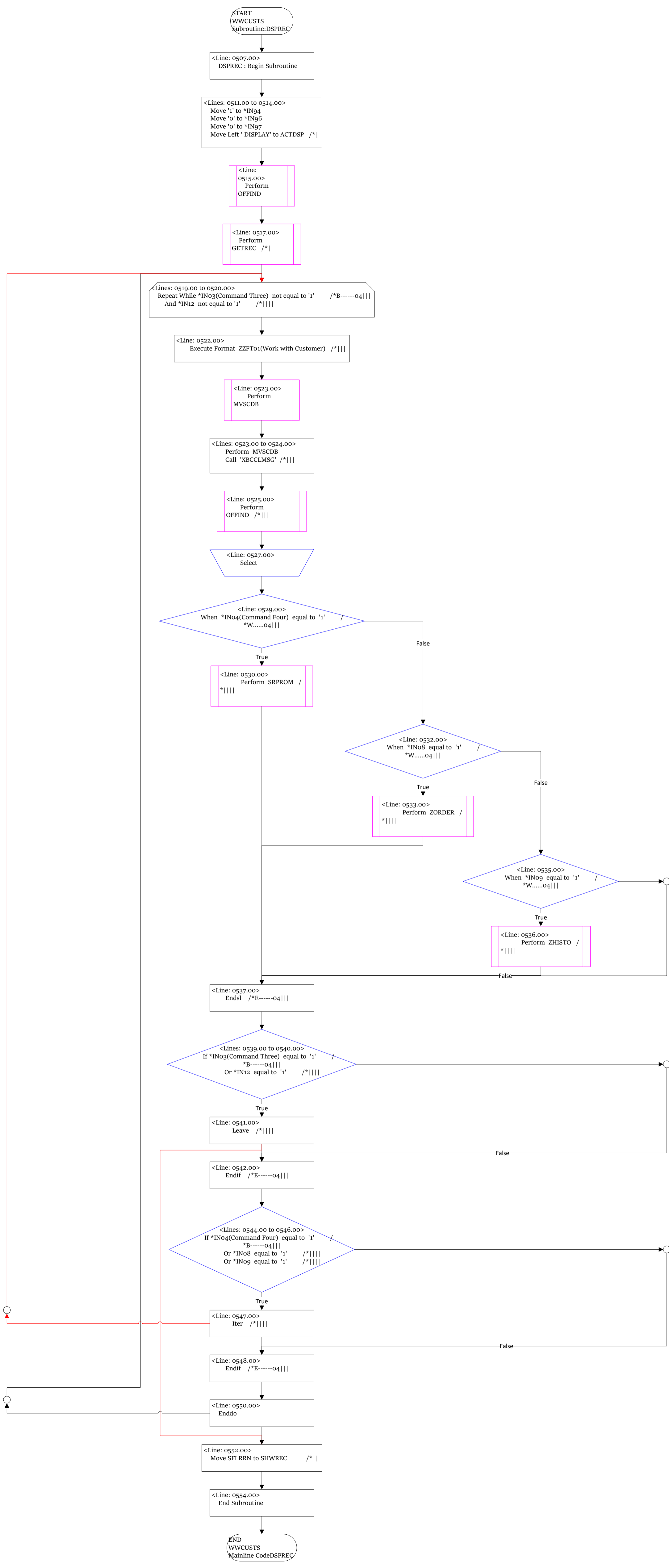
<Line: 0346.00>  
End Subroutine

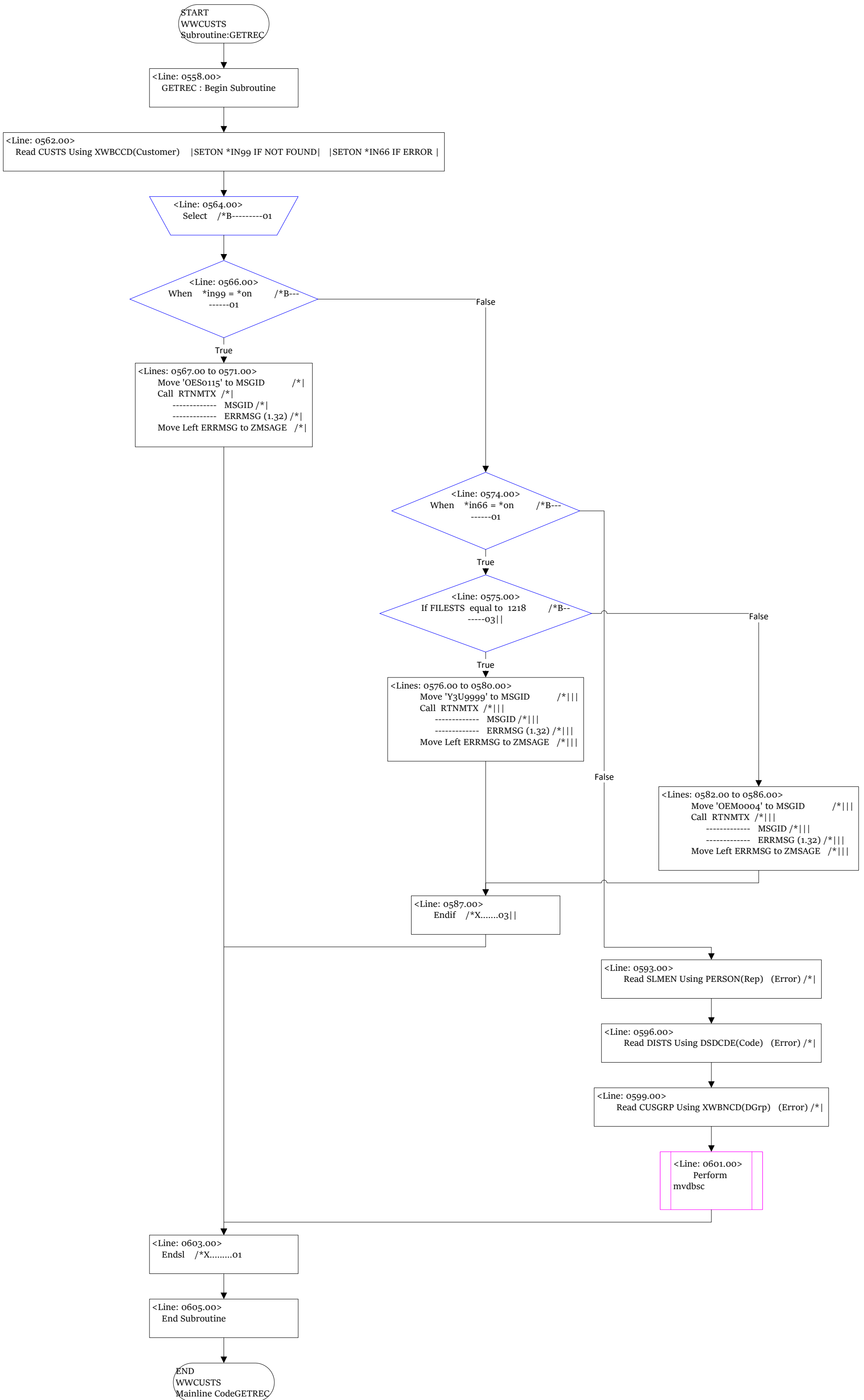
END  
WWCUSTS  
Mainline CODEADDREC











START  
WWCUSTS  
Subroutine:\*INZSR

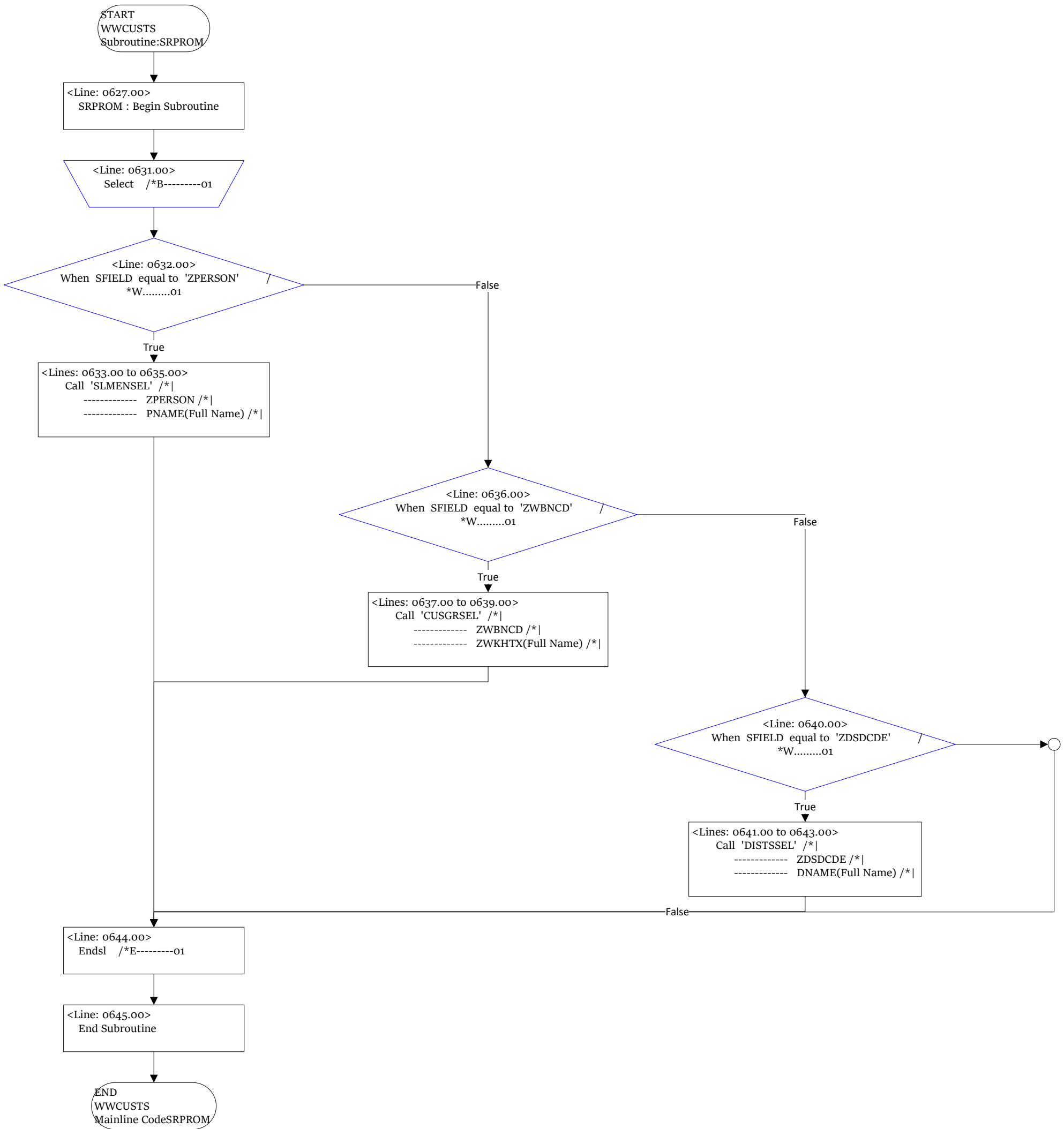
<Line: 0609.00>  
\*INZSR : Begin Subroutine

<Lines: 0614.00 to 0615.00>  
Move '1' to \*IN82  
Move Left 'WWCUSTS ' to ZZPGM(Program Name)

<Lines: 0617.00 to 0622.00>  
Move \*DATE to ZZDATE  
Move \*YEAR to ZYR  
Move '-' to FILLR1  
Move \*MONTH to ZMTH  
Move '-' to FILLR2  
Move \*DAY to ZDAY

<Line: 0623.00>  
End Subroutine

END  
WWCUSTS  
Mainline Code\*INZSR



START  
WWCUSTS  
Subroutine:OFFIND

```
graph TD; Start([START  
WWCUSTS  
Subroutine:OFFIND]) --> Line0649[<Line: 0649.00>  
OFFIND : Begin Subroutine]; Line0649 --> Lines0653[<Lines: 0653.00 to 0661.00>  
Move *OFF to *IN99  
Move *OFF to *IN31  
Move *OFF to *IN32  
Move *OFF to *IN33  
Move *OFF to *IN34  
Move *OFF to *IN35  
Move *OFF to *IN36  
Move *OFF to *IN37  
Move *BLANKS to ZMSAGE]; Lines0653 --> Line0662[<Line: 0662.00>  
End Subroutine]; Line0662 --> End([END  
WWCUSTS  
Mainline CodeOFFIND]);
```

<Line: 0649.00>  
OFFIND : Begin Subroutine

<Lines: 0653.00 to 0661.00>  
Move \*OFF to \*IN99  
Move \*OFF to \*IN31  
Move \*OFF to \*IN32  
Move \*OFF to \*IN33  
Move \*OFF to \*IN34  
Move \*OFF to \*IN35  
Move \*OFF to \*IN36  
Move \*OFF to \*IN37  
Move \*BLANKS to ZMSAGE

<Line: 0662.00>  
End Subroutine

END  
WWCUSTS  
Mainline CodeOFFIND

START  
WWCUSTS  
Subroutine:ZORDER

```
graph TD; Start([START  
WWCUSTS  
Subroutine:ZORDER]) --> Line0666[<Line: 0666.00>  
ZORDER : Begin Subroutine]; Line0666 --> Lines0672[<Lines: 0672.00 to 0673.00>  
Call 'WWCONHDR' /*|  
----- XWBCCD(Customer) /*|]; Lines0672 --> Line0683[<Line: 0683.00>  
End Subroutine]; Line0683 --> End([END  
WWCUSTS  
Mainline CodeZORDER]);
```

<Line: 0666.00>  
ZORDER : Begin Subroutine

<Lines: 0672.00 to 0673.00>  
Call 'WWCONHDR' /\*|  
----- XWBCCD(Customer) /\*|

<Line: 0683.00>  
End Subroutine

END  
WWCUSTS  
Mainline CodeZORDER

START  
WWCUSTS  
Subroutine:ZHISTO

```
graph TD; Start([START  
WWCUSTS  
Subroutine:ZHISTO]) --> Box1[<Line: 0687.00>  
ZHISTO : Begin Subroutine]; Box1 --> Box2[<Lines: 0693.00 to 0694.00>  
Call 'WWTRNHST' /*|  
----- XWBCCD(Customer) /*|]; Box2 --> Box3[<Line: 0704.00>  
End Subroutine]; Box3 --> End([END  
WWCUSTS  
Mainline CodeZHISTO]);
```

<Line: 0687.00>  
ZHISTO : Begin Subroutine

<Lines: 0693.00 to 0694.00>  
Call 'WWTRNHST' /\*|  
----- XWBCCD(Customer) /\*|

<Line: 0704.00>  
End Subroutine

END  
WWCUSTS  
Mainline CodeZHISTO

START  
WWCUSTS  
Subroutine: MVDBSC

<Line: 0706.00>  
MVDBSC : Begin Subroutine

<Lines: 0707.00 to 0727.00>  
Move Left XWBCCD(Customer) to ZWBCCD /\*|  
Move Left XWG4TX(Cust Ref) to ZWG4TX /\*|  
Move Left XWB2CD(Statement Account) to ZWB2CD /\*|  
Move Left XWB3CD(Related Account) to ZWB3CD /\*|  
Move Left XWHITX(Tax Reg) to ZWHITX /\*|  
Move Left XWEoNB(Bank) to ZWEoNB(Bank) /\*|  
Move Left XWJUNo(Bank A/c) to ZWJUNo(Bank A/c) /\*|  
Move Left XWDVCD(Forex) to ZWDVCD /\*|  
Move Left XWBNCD(DGrp) to ZWBNCD /\*|  
Move Left PERSON(Rep) to ZPERSON /\*|  
Move Left DSDCDE(Code) to ZSDCDE /\*|  
Move Left XWBTCD(Terms) to ZWBTCD /\*|  
Move Left XWGIVA(Credit Limit) to ZWGIVA(Credit Limit) /\*|  
Move Left XWAOCD(Stl Dsc) to ZWAOCD /\*|  
Move Left XWBBCD(Int) to ZWBBCD /\*|  
Move Left XWG4To(Cr Guarantee) to ZWG4To /\*|  
Move Left XWC7ST(B/O) to ZWC7ST /\*|  
Move Left XWDAST(Lang) to ZWDAST /\*|  
Move Left XWBPD0(Date Loaded) to ZWBPD0 /\*|  
Move Left XWBAD0(Chg-Date) to ZWBAD0 /\*|  
Move Left XWKHTX(Description) to ZWKHTX(Full Name) /\*|

<Line: 0728.00>  
End Subroutine

END  
WWCUSTS  
Mainline Code MVDBSC



START  
WWCUSTS  
Subroutine: MVSCDB

<Line: 0730.00>  
MVSCDB : Begin Subroutine

<Lines: 0731.00 to 0751.00>  
Move Left ZWBCCD to XWBCCD(Customer) /\*|  
Move Left ZWG4TX to XWG4TX(Cust Ref) /\*|  
Move Left ZWB2CD to XWB2CD(Statement Account) /\*|  
Move Left ZWB3CD to XWB3CD(Related Account) /\*|  
Move Left ZWHITX to XWHITX(Tax Reg) /\*|  
Move Left ZWEoNB(Bank) to XWEoNB(Bank) /\*|  
Move Left ZWJUNo(Bank A/c) to XWJUNo(Bank A/c) /\*|  
Move Left ZWDVCD to XWDVCD(Forex) /\*|  
Move Left ZWBNCd to XWBNCd(DGrp) /\*|  
Move Left ZPERSON to PERSON(Rep) /\*|  
Move Left ZSDCDE to DSDCDE(Code) /\*|  
Move Left ZWBTCd to XWBTCd(Terms) /\*|  
Move Left ZWGIVA(Credit Limit) to XWGIVA(Credit Limit) /\*|  
Move Left ZWAOCD to XWAOCD(Stl Dsc) /\*|  
Move Left ZWBBCD to XWBBCD(Int) /\*|  
Move Left ZWG4To to XWG4To(Cr Guarantee) /\*|  
Move Left ZWC7ST to XWC7ST(B/O) /\*|  
Move Left ZWDAST to XWDAST(Lang) /\*|  
Move Left ZWBPD0 to XWBPD0(Date Loaded) /\*|  
Move Left ZWBAD0 to XWBAD0(Chg-Date) /\*|  
Move Left ZWKHTX(Full Name) to XWKHTX(Description) /\*|

<Line: 0752.00>  
End Subroutine

END  
WWCUSTS  
Mainline Code MVSCDB